



Gopher Eliminator

Operator's Manual



For GE-2000 Gopher Eliminator

GOPHER ELIMINATOR GE-2000 OPERATOR'S MANUAL

This manual is applicable to all models of the
Gopher Eliminator Series.

For inquiries call or write to:
Schlagel Manufacturing, Inc.
4154 Buttermilk Road
Torrington, WY 82240

Toll Free: 888-889-1504
Phone: 307-532-4451
Fax: 307-532-8994

E-mail: sales@schlagel.net
Website: www.schlagel.net

GENERAL INFORMATION

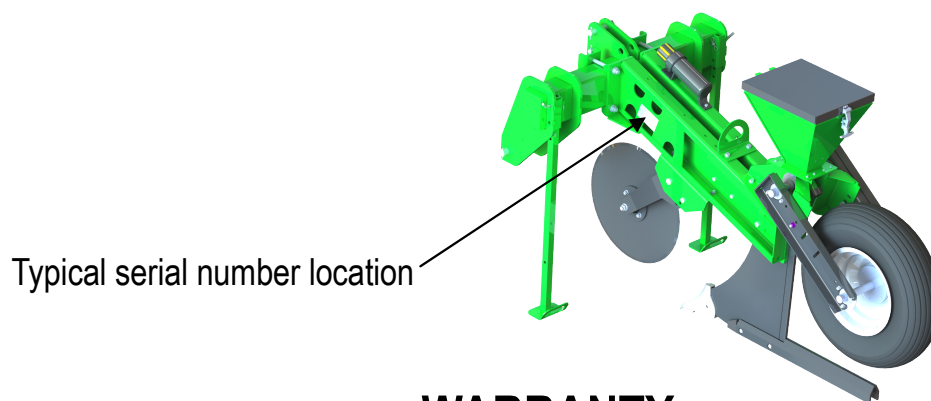
The photos and drawings in this manual may differ slightly from your machine due to design changes. The manufacturer reserves the right to change the design of the machine at any time without notifying the customer.

SERIAL NUMBER AND DECAL LOCATION

It is important to have access to your machine's serial number and keep it on record at all times. The serial number decal on the Gopher Eliminator is located on the center of the side body (left side if standing behind the unit). This decal also includes the machine's model number and our patent number. We recommend the serial & model numbers be written in this manual in the spaces below. Should your sticker become damaged and/or unable to read, you can obtain a new one by sending us your machine's model and serial numbers and a return address.

Having your model and serial number ready when ordering replacement parts will help avoid confusion and assure that you get the correct parts.

Serial Number: _____ Model Number: _____



WARRANTY

All new Gopher Eliminator machines come with a one year warranty. This warranty covers all non-wear parts (everything except coulters and points) for one year from the date of purchase. Any labor needed for repairs will not be covered unless labor is provided by a Schlagel Manufacturing employee or is pre-approved by Schlagel Manufacturing. If warranty parts or repairs are needed, please contact Schlagel Manufacturing or your local dealer with your Gopher Eliminator Serial and Model number along with the warranty authorization sheet included at the back of this manual. Warranty parts and repairs will not be authorized for any part that has been misused, abused, or failed because routine maintenance as specified in this manual was not performed.

SAFETY FIRST!



Watch for this symbol throughout this manual. The information that follows this symbol requires your attention and involves your safety!!!

- **Always disengage all drives, lower machine, put tractor in park, and shut off engine before performing any maintenance or repairs on your machine.**

This includes but is not limited to:

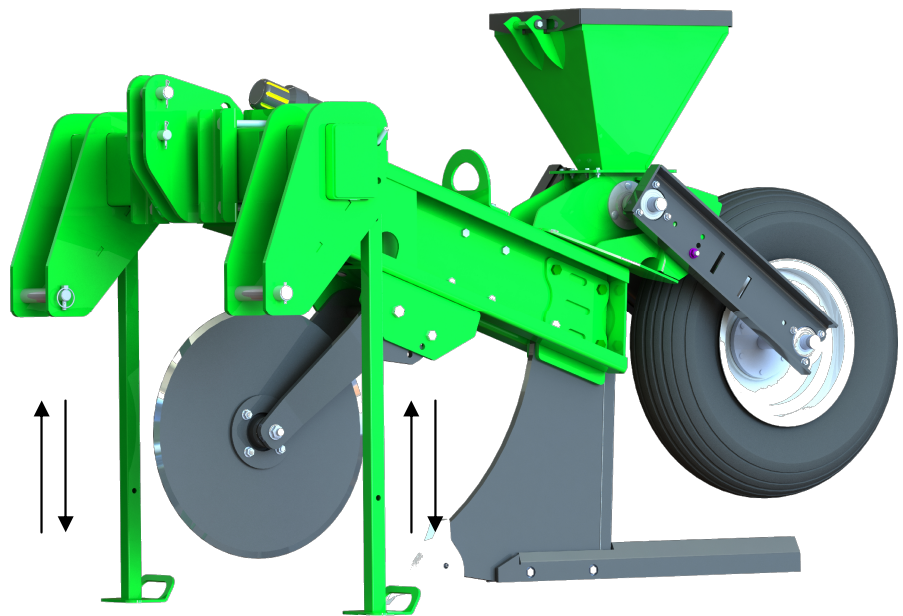
- **Lubricating**
 - **Making Adjustments**
 - **Repair Work**
 - **Filling Tanks**
 - **Machine Inspection**
 - **Replacing Parts**
-
- **Keep hands and feet away from any moving parts at all times.**
 - **Never crawl under the machine without the bar stands in place.**
 - **Always wear safety glasses and other protective wear as needed when performing any adjustment or maintenance.**
 - **Always watch overhead for power lines and other structures when raising/folding/unfolding any piece of equipment.**
 - **THINK AHEAD... Before doing any maintenance, preview what needs to be done and think about the best & safest way to do the job.**
 - **If at any time you have questions about the machine, setting the machine, safety issues, repair issues, or any other inquiry, don't hesitate to call us. Our toll free phone number is 1-888-889-1504.**

SPECIAL SAFETY PRECAUTIONS

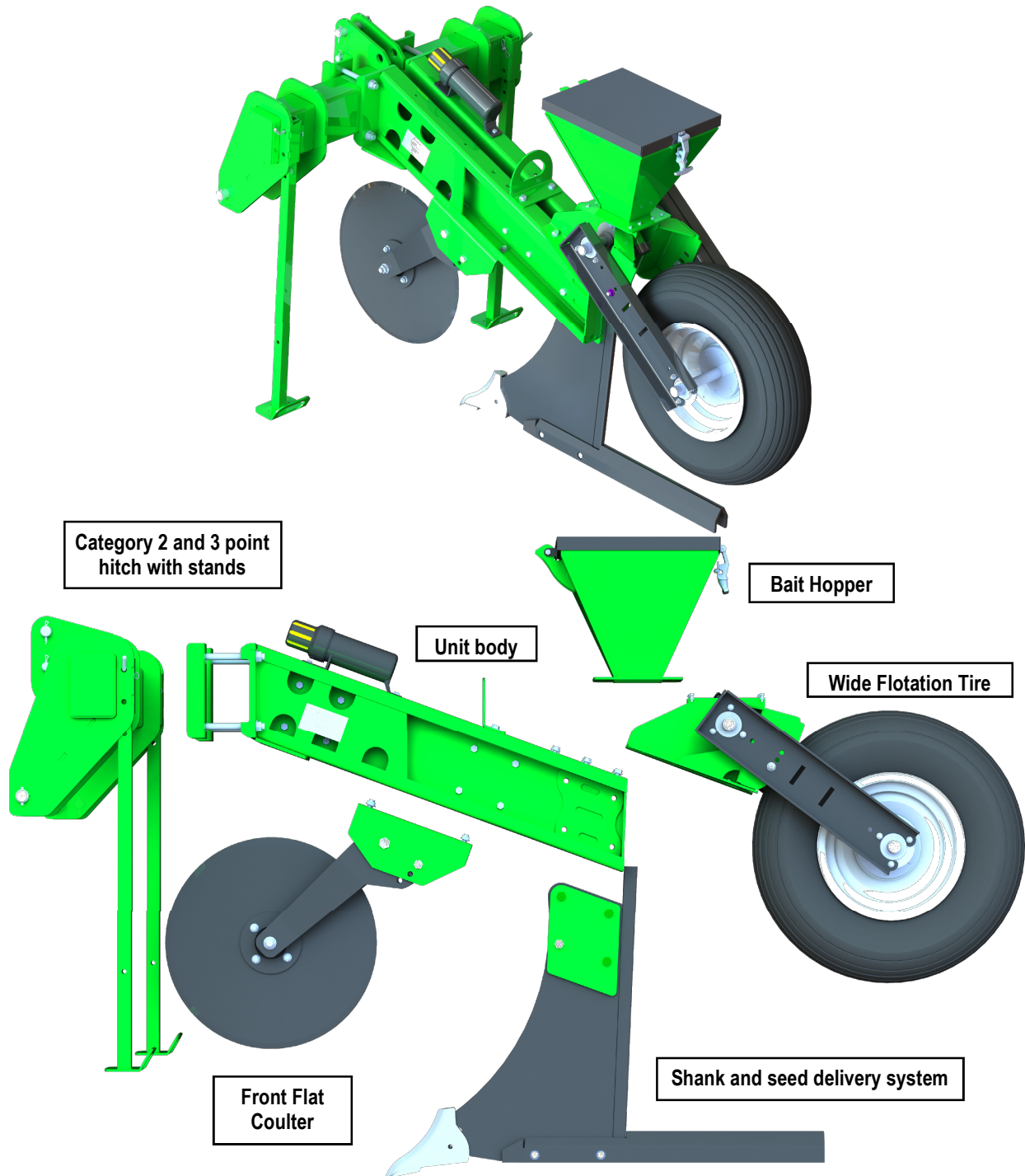
- The flat coulter on the Gopher Eliminator has very sharp edges. Use extreme caution when around the coulter.
- Before doing any maintenance on or under the machine, set the machine on the ground and lower the bar stands onto solid level ground to prevent it from tipping forward and falling.
- If maintenance requires the machine to be raised, leave the machine attached to the tractor and lower the bar stands and stand extensions onto solid level ground before performing maintenance.
- When removing and adjusting components, be aware of the weight of the components you will be moving.

When the machine is hitching and unhitching, stands need to be lowered and locked.

When the machine is in use, stands need to be completely raised and locked.



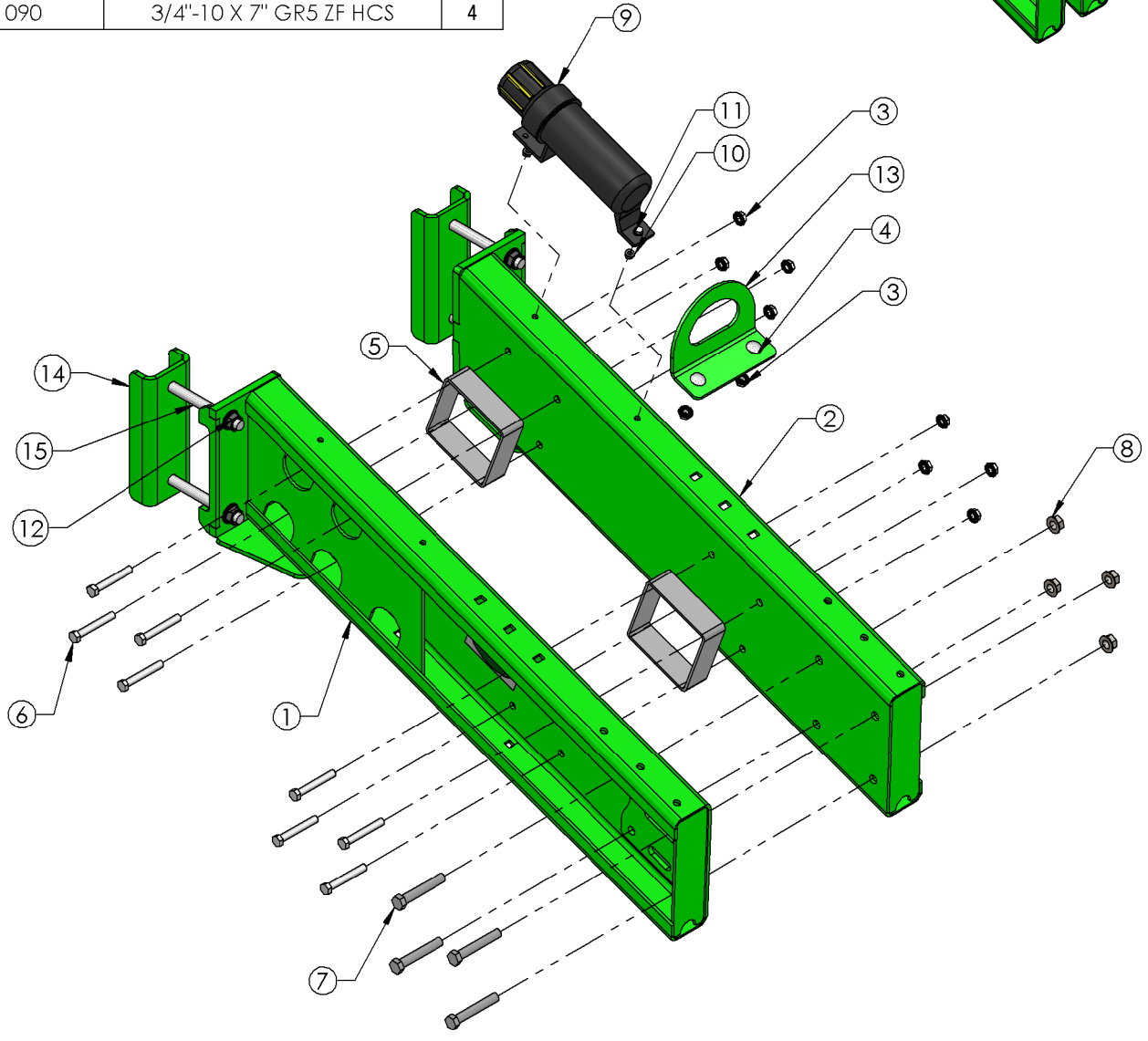
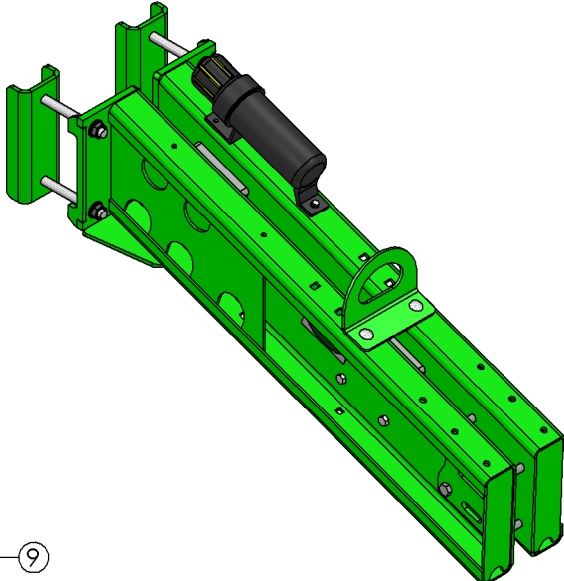
GOPHER ELIMINATOR COMMON ASSEMBLIES



We recommend you take a look through the parts section of this manual for the basic assemblies and parts of the SchlageL Gopher Eliminator before reading the section on adjusting your Gopher Eliminator. Each assembly will have some form of adjustment regarding its particular function.

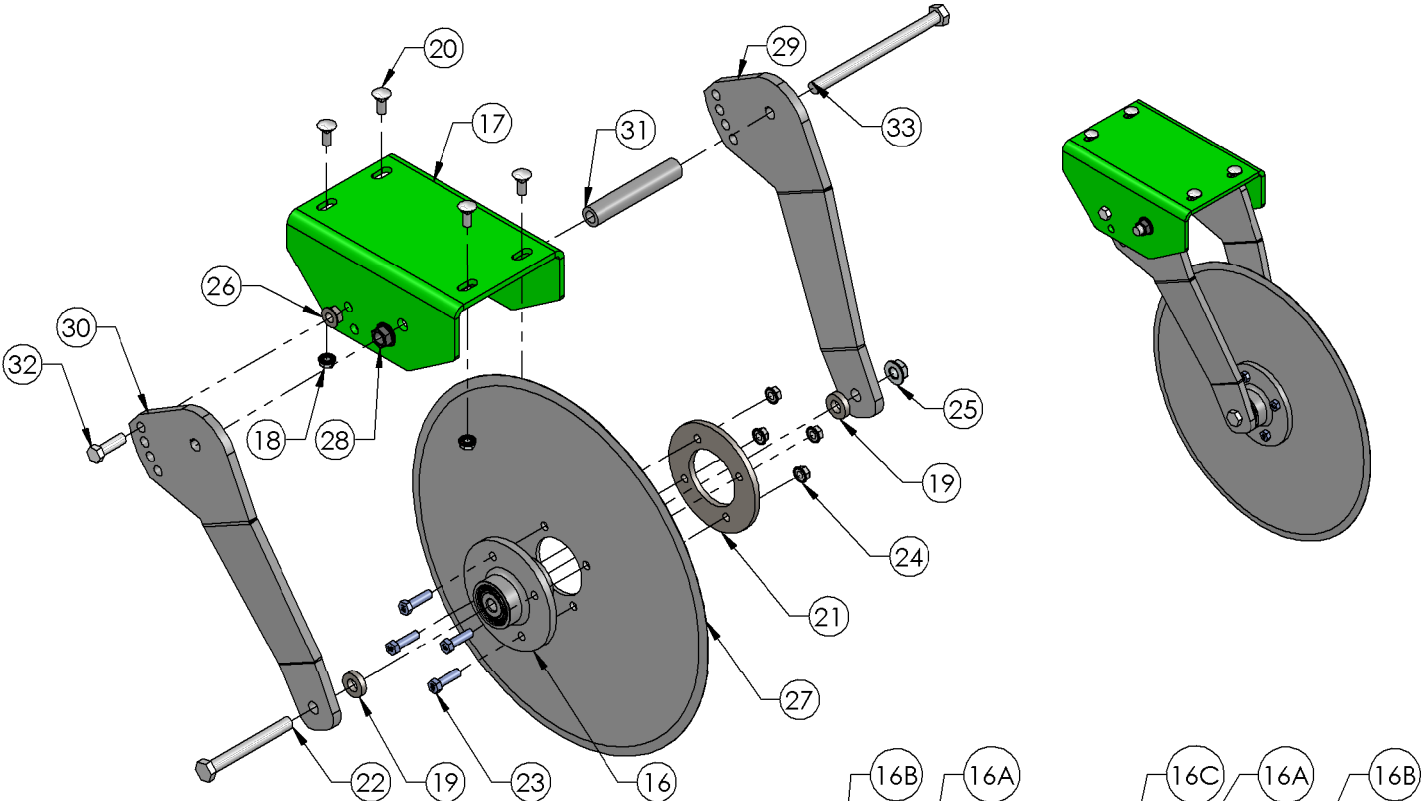
GE-2000, MAIN BODY

ITEM NO.	PART NUMBER	DESCRIPTION	QTY.
1	GE-1002L	LEFT SIDE BODY	1
2	GE-1002R	RIGHT SIDE BODY	1
3	HW-1828	1/2"-13 ZF SERRATED FN	10
4	HW-1955	1/2"-13 X 1-1/4" ZF GR5 RH CB	2
5	GE-1048	6" X 3/16" SQ TUBE SPACER	2
6	HW-1025	1/2"-13 X 3-1/2" GR5 ZF HCS	8
7	HW-1039	5/8"11 X 4" GR5 ZF HCS	4
8	HW-1891	5/8"-11 ZF SERRATED FN	4
9	HW-2078	OPERATOR'S MANUAL TUBE	1
10	HW-1473	5/16"-18 ZF SFN	2
11	HW-2159	5/16" X 1-1/4" HH ZF SFB	2
12	HW-1679	3/4" NC NUT, SERRATED FLANGE	4
13	GE-1057	GE-2000 LIFT EYE	1
14	GE-1063	Bolt Plate	2
15	HW-1090	3/4"-10 X 7" GR5 ZF HCS	4

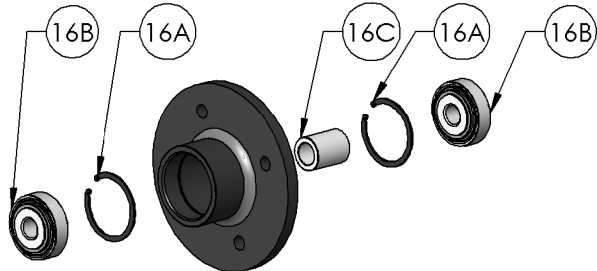


GE-2000, FLAT COULTER

ITEM NO.	PART NUMBER	DESCRIPTION	QTY.
16	TP-2943	FLAT COULTER HUB ASSEMBLY	1
17	GE-1035	FC MOUNT BRACKET	1
18	HW-1828	1/2"-13 ZF SERRATED FN	4
19	TP-4687	HUB SPACER	2
20	HW-1955	1/2"-13 X 1-1/4" ZF GR5 RH CB	4
21	TP-2283	BACKING PLATE, FOR FLAT COULTER	1
22	HW-1093	3/4"-10 X 6-1/2" GR5 ZF HCS	1
23	HW-1251	1/2"-20 X 1-3/4" GR5 ZF HCS	4
24	HW-1109	1/2"-20 ZF GR5 FHN	4
25	HW-2345	3/4"-10 GrF ZF FLANGE TOP LN	1
26	HW-1891	5/8"-11 ZF SERRATED FN	2
27	HW-2446	FLAT COULTER, 24" DIA 6.5 MM. 4 BOLT X 5" BOLT CIRCLE	1
28	HW-1679	3/4" NC NUT, SERRATED FLANGE	1
29	GE-1034L	FC FORK PLATE	1
30	GE-1034R	FC FORK	1
31	GE-1040	PA PIVOT BUSHING	1
32	HW-1127	5/8-11 " X 2" GR5 ZF HCS	2
33	HW-1177	3/4"-10 X 10" GR5 ZF HCS	1

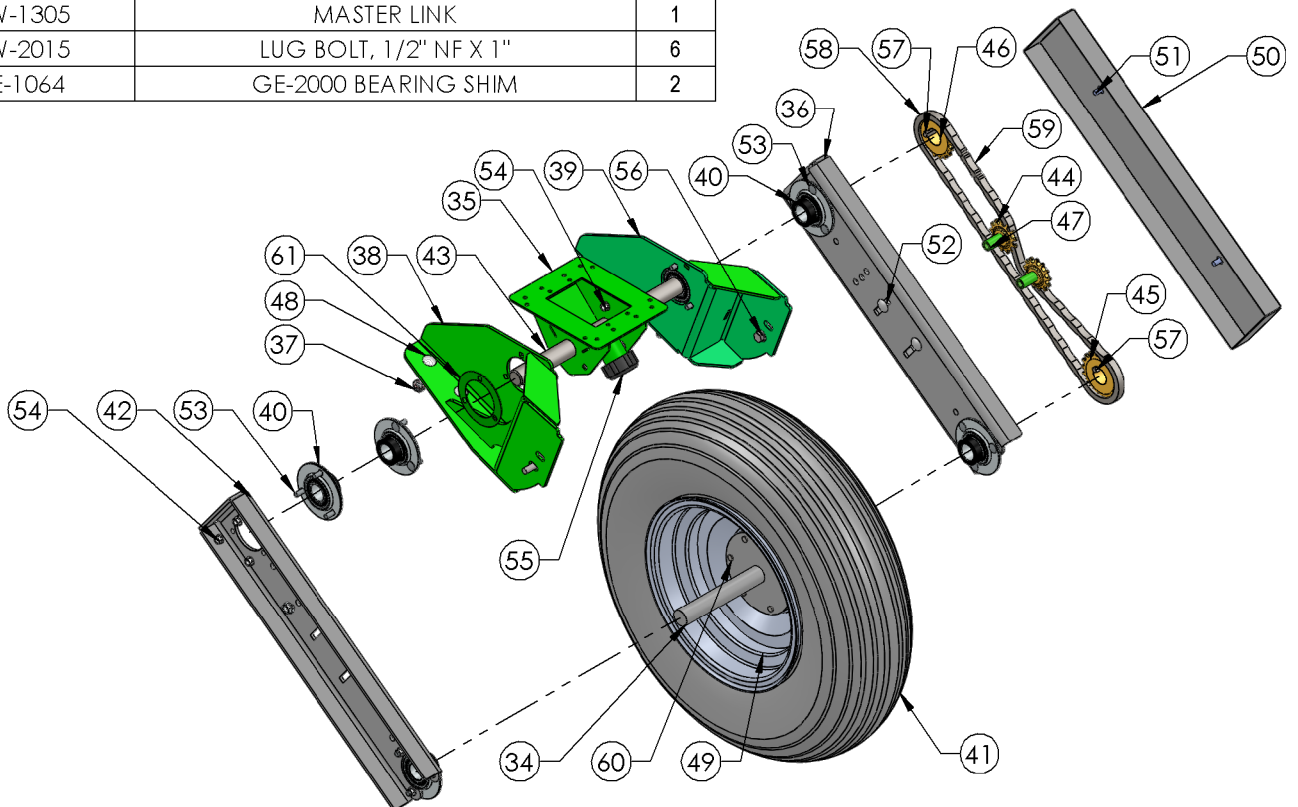
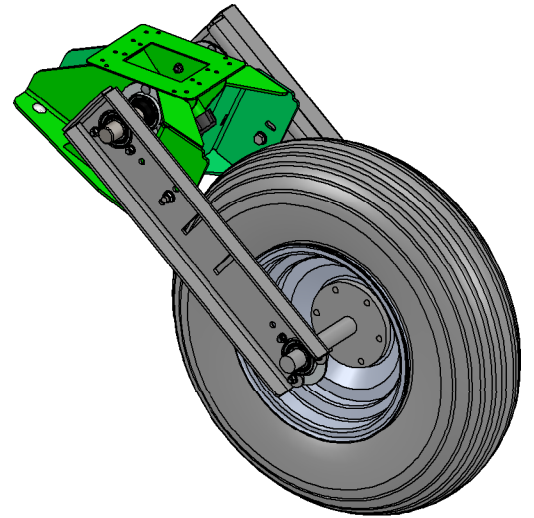


TP-2943 FLAT COULTER HUB ASSEMBLY BREAKDOWN			
ITEM NO.	PART NUMBER	DESCRIPTION	QTY.
16A	HW-1460	SNAP RING, 2.33" INTERNAL	2
16B	HW-1461	BEARING	2
16C	TP-2942	SPACER, FLAT COULTER HUB (1.610")	1



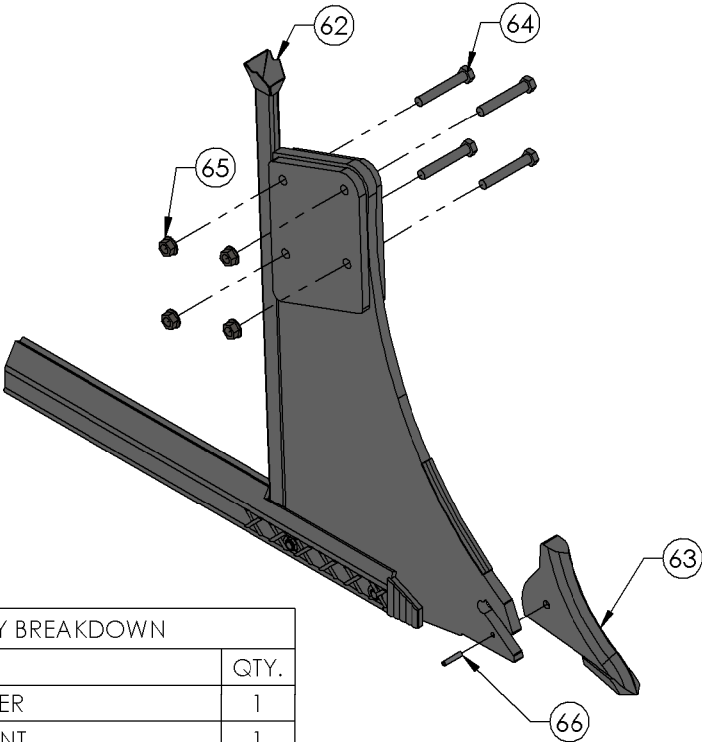
GE-2000, DRIVE WHEEL

ITEM NO.	PART NUMBER	DESCRIPTION	QTY.
34	GE-050	AXLE WELDMENT, GOPHER	1
35	GE-053	BAIT TROUGH	1
36	GE-1052	MAIN DRIVE PIVOT ARM WELDMENT	1
37	HW-1828	1/2"-13 ZF SERRATED FN	10
38	GE-1047L	HIP BRACKET LEFT WELDMENT	1
39	GE-1047R	GE HIP BRACKET WLDMT	1
40	HW-2170	GOPHER BEARING	6
41	HW-2393	Tire 11L15 8 ply	1
42	GE-1053	SWING ARM	1
43	GE-028	BAIT DISPENSING SHAFT	1
44	HW-2107	5013 IDLER	2
45	HW-2105	G&G 50B20	1
46	HW-2106	G&G 50B16	1
47	GE-035	SPROCKET SPACER	2
48	HW-1955	1/2"-13 X 1-1/4" ZF GR5 RH CB	6
49	HW-2338	WHEEL, 15X8, 6 BOLT ON 6" BC, 4.625" PILOT	1
50	GE-071	CHAIN GUARD	1
51	HW-1570	3/8"-16 X 3/4" HH ZF SS FB	2
52	HW-1467	1/2"-13 X 3" GR5 ZF RH CB	2
53	HW-1152	3/8"-16 X 1" GR5 ZF RH CB	18
54	HW-1391	3/8"-16 ZF HARDENED SFN	18
55	HW-2403	CAP 1.5	1
56	HW-1959	1/2"-13 X 1-1/4" HH ZF SS FB	2
57	GE-077	KEY STOCK 3/8" X 3/8" X 1.5"	2
58	GE-078	CHAIN FOR GOPHER MACHINE	1
59	HW-1305	MASTER LINK	1
60	HW-2015	LUG BOLT, 1/2" NF X 1"	6
61	GE-1064	GE-2000 BEARING SHIM	2

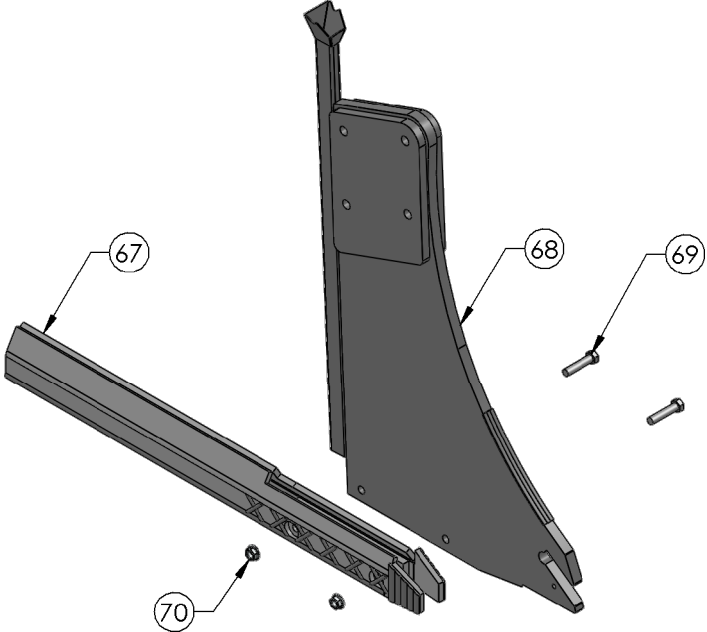


GE-2000, SHANK

ITEM NO.	PART NUMBER	DESCRIPTION	QTY.
62	GE-1049	SHANK AND BURROW FORMER ASSY	1
63	TP4647N	POINT, 3/4" CAST	1
64	HW-1039	5/8"11 X 4" GR5 ZF HCS	4
65	HW-1891	5/8"-11 ZF SERRATED FN	4
66	HW-1479	ROLL PIN (SPRING PIN), 5/16" X 1.5", STAINLESS STEEL	1

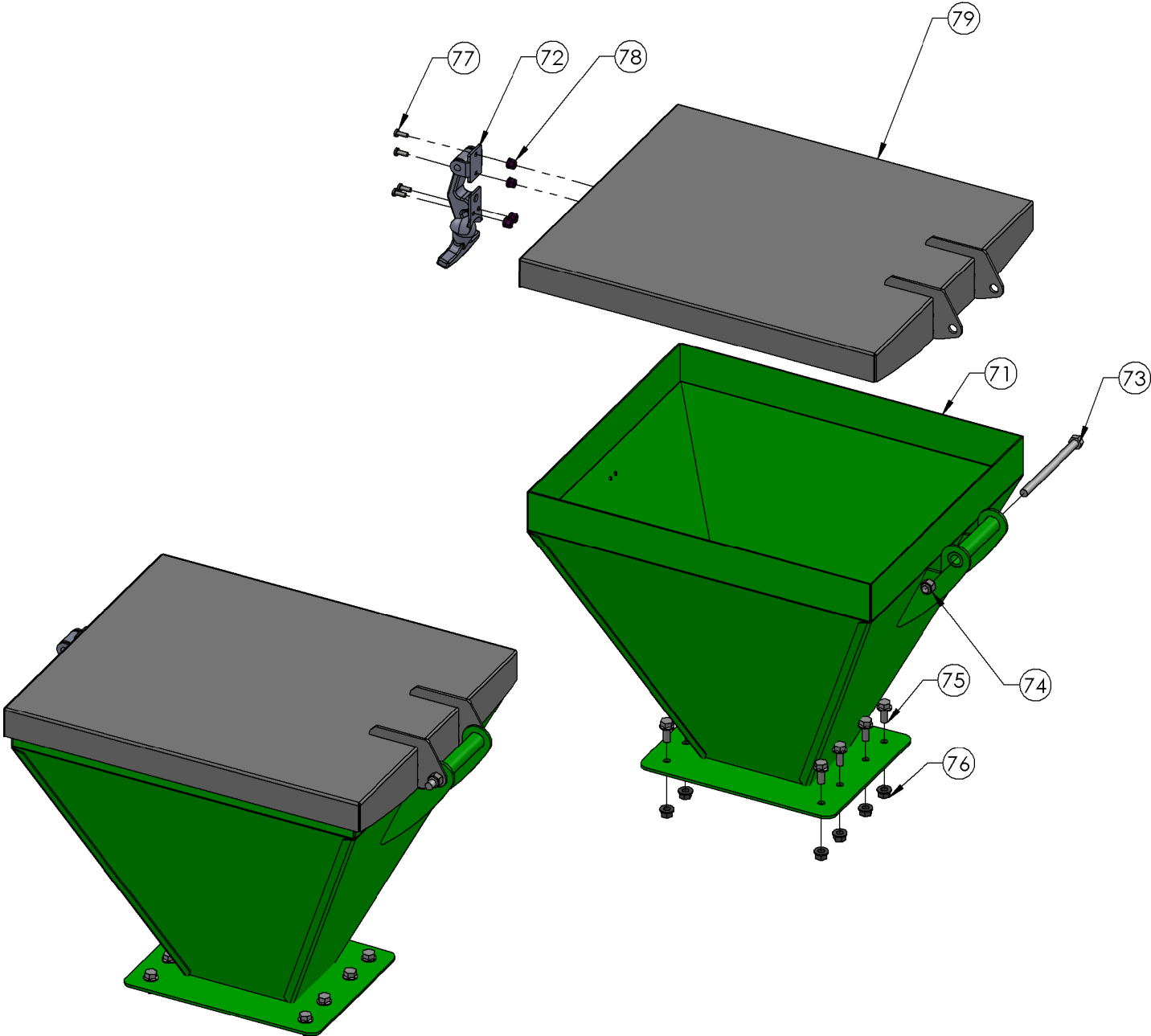


GE-1049 SHANK AND BURROW FORMER ASSEMBLY BREAKDOWN			
ITEM NO.	PART NUMBER	DESCRIPTION	QTY.
67	GE-051	BURROW FORMER	1
68	GE-1050	SHANK WELDMENT	1
69	HW-1125	1/2"-13 X 2-1/4" GR5 ZF HCS	2
70	HW-1828	1/2"-13 ZF SERRATED FN	2



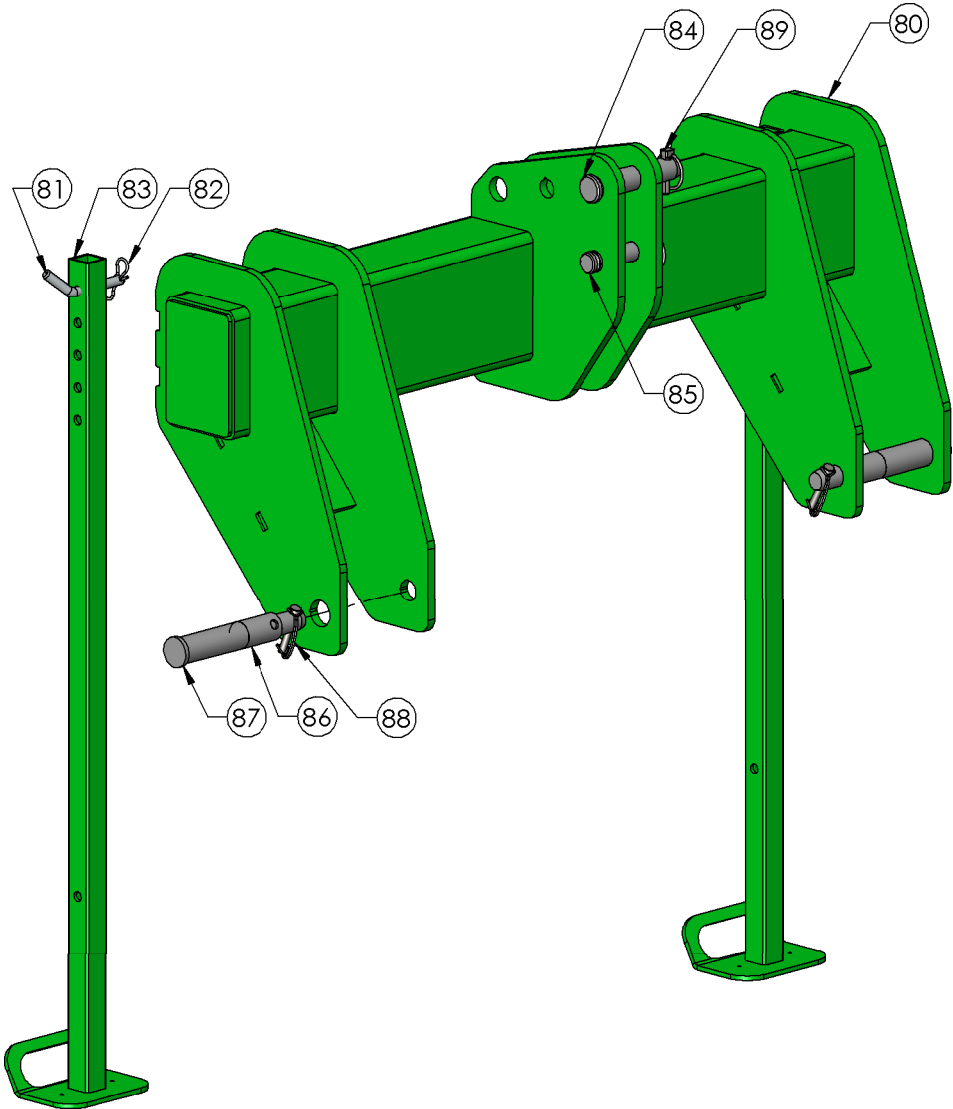
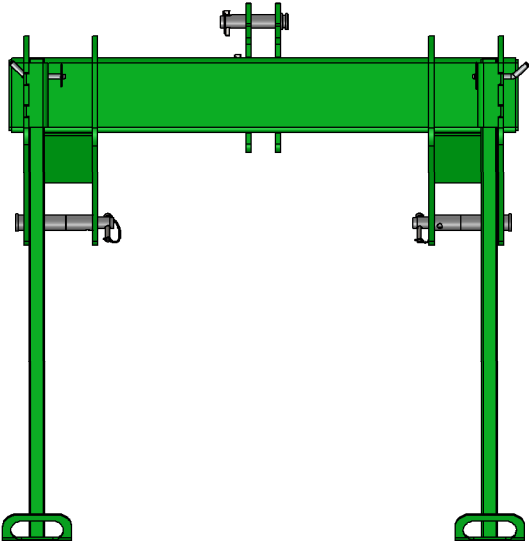
GE-2000, HOPPER

ITEM NO.	PART NUMBER	DESCRIPTION	QTY.
71	GE-1010	HOPPER BODY	1
72	HW-2459	RUBBER DRAW LATCH W METAL STRIKE MMC# (1685A26)	1
73	HW-1111	3/8"-16 X 5" GR5 ZF HCS	1
74	HW-1155	3/8"-16 GR2 ZF NYLON INSERT LN	1
75	HW-2159	5/16" X 1-1/4" HH ZF SFB	8
76	HW-1473	5/16"-18 ZF SFN	8
77	HW-1575	#10-24 x 1/2 PAN HD MACHSCREW	4
78	HW-2246	#10-24 GR2 ZF NYLON INSERT LN	4
79	GE-088	HOPPER LID	1



GE-2000, 3 POINT ASSEMBLY

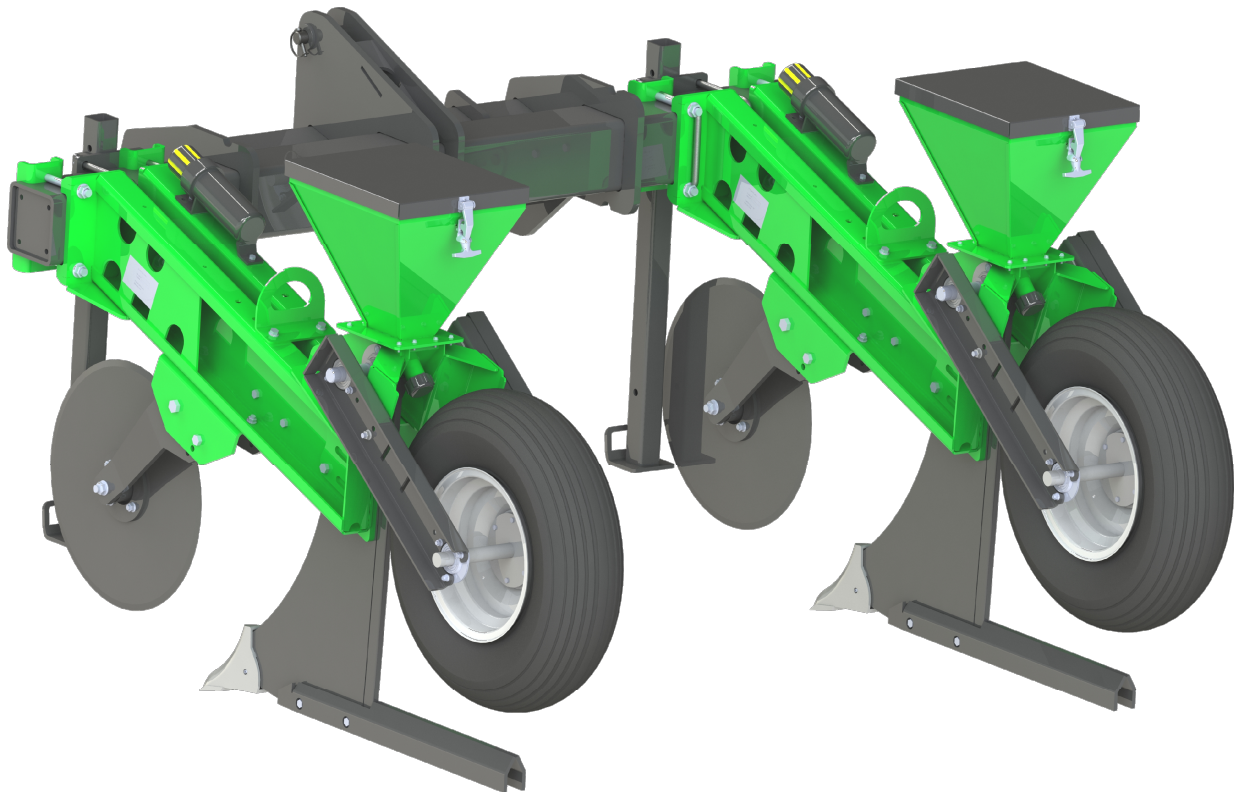
ITEM NO.	PART NUMBER	DESCRIPTION	QTY.
80	GE-1031	3 POINT WELDMENT	1
81	HW-1957	BENT PIN, 1/2" X 3" X 45 DEG.	2
82	HW-1958	BOWTIE PIN, 0.120" WIRE, 1/2"-5/8" CAP.	2
83	GE-046	BAR STAND	2
84	HW-2517	CAT 3 CENTER LINK PIN	1
85	HW-2516	CAT 2 CENTER LINK PIN	1
86	HW-2515	CAT 2-3 LIFT ARM BUSHING	2
87	HW-2514	CAT 2-3 LIFT ARM PIN	2
88	HW-2156	SNAP PIN 3/8" X 2 1/4" (3PT)	2
89	HW-1031	7/16" X 2" LYNCH PIN	2



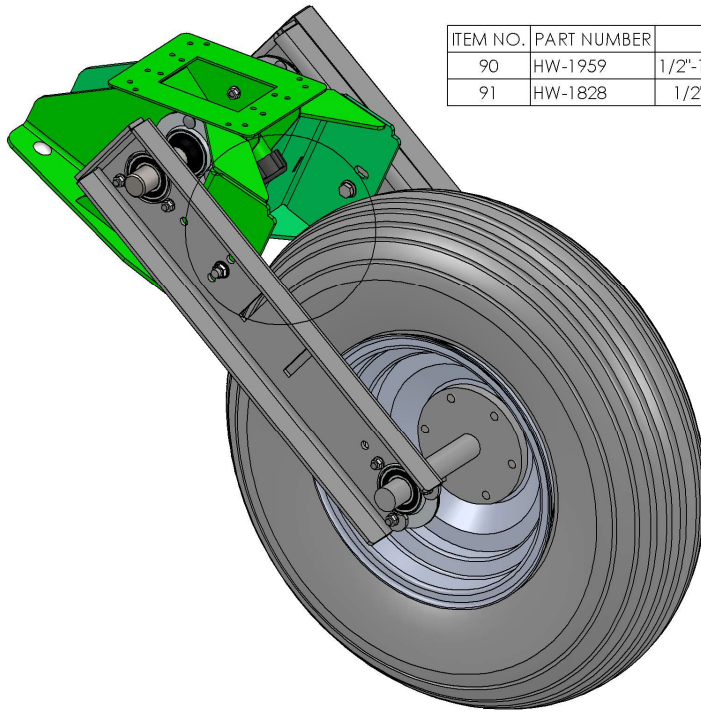
INFORMATION REGARDING GOPHER ELIMINATOR

The Gopher Eliminator is built with larger tractors in mind but will work fine on smaller tractors as well. It has category 2 and 3 three-point hookups, a well built frame, and all the components to withstand the horsepower of larger tractors. The Gopher Eliminator is built with a 24" diameter flat coulter to cut trash and roots. The shank is constructed of 3/4" plate and has a soil-shattering, hard-surfaced point. This replaceable point helps prevent slabbing and bringing up large masses of soil. It will shatter and flow through the ground. The seed delivery system is simple and designed to minimize plugging up. A long forming tunnel makes the bait easily accessible to the vermin. The forming tunnel has also been hard surfaced for maximum durability.

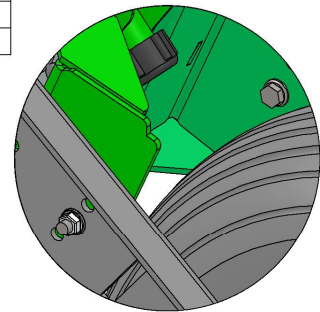
The front flat coulter and the rear gauge/drive tire are adjustable for depth. Machine stands are mounted on each end of the three-point bar. For larger operations, these units can be unbolted from the standard three-point bar and two or more units can be mounted onto longer bars for a multiple-baiting system. See the view below as an example of a double unit setup.



ADJUSTING GOPHER ELIMINATOR



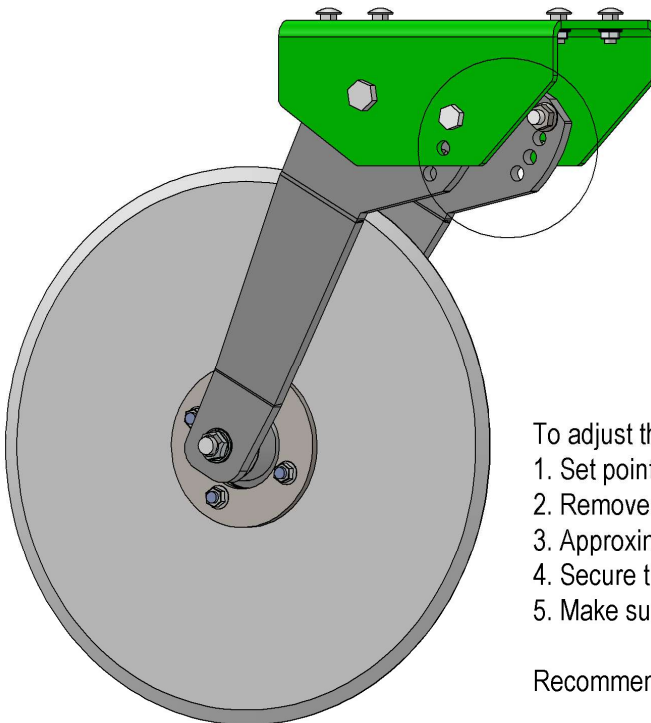
ITEM NO.	PART NUMBER	DESCRIPTION	QTY.
90	HW-1959	1/2"-13 X 1-1/4" HH ZF SS FB	2
91	HW-1828	1/2"-13 ZF SERRATED FN	2



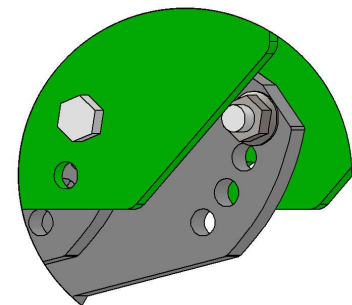
Depth Chart	
Setting	Approximate depth to point (Inches)
Shallow Depth	3-3/8"
Medium Depth	5-1/4"
Maximum Depth	7-1/2"

To adjust the rear drive wheel:

1. Remove nuts and bolts
2. Use the depth chart to determine which setting is appropriate
3. Secure flotation tire in place with nuts and bolts
4. Make sure nuts are locked in place at all times during operation



ITEM NO.	PART NUMBER	DESCRIPTION	QTY.
92	HW-1127	5/8"-11 " X 2" GR5 ZF HCS	2
93	HW-1891	5/8"-11 ZF SERRATED FN	2



To adjust the flat coupler depth:

1. Set point depth first
2. Remove nuts and bolts
3. Approximate depth by measuring down from the lowest point on the rear tire
4. Secure the flat coupler in place with nuts and bolts
5. Make sure nuts are locked in place at all times during operation

Recommended depth: 4-5" under surface

TROUBLESHOOTING

PROBLEM	PROBABLE CAUSE	CORRECTION
PLUGGING BETWEEN FLAT COULTER AND SHANK	Flat coulter not deep enough	Lower flat coulter
	Shank not deep enough	Set machine to run deeper
	Machine tilling depth not consistent caused by manually raising and lowering machine in tough areas	Gear down tractor and maintain consistent machine tilling depth
	Flat coulter not aligned with shank	Align flat coulter with shank
	If ridge tilling, row unit is running off to one side of ridge	See "machine not trailing straight" section
	Residue worked too deep into ground and is wet (possibly from disking too deep)	Lower flat coulters
MACHINE NOT TRAILING STRAIGHT	Unit (s) not square to bar	Square unit (s) to bar
	Loose 3-point hitch arms	Remove slack in tractor's 3-point sway blocks
	Excessive space between 3-point quick coupler and machines 3-point plates	Add spacers between 3-point quick coupler and machines 3-point plates
	Tire pressures not equal or too low	Put adequate and equal pressures in tires
	Tractor tires not set to correct spacing	Adjust tractor tire spacing
	Flat coulter not aligned properly	Align flat coulter
	Lift arms on tractor are not equal length	Adjust tractor linkage
MACHINE NOT PENETRATING INTO SOIL	Flat coulters too deep (holding up unit)	Raise flat coulters
	Shank depth set too shallow	Lower shanks
	Points worn excessively	Replace points
	Tractor 3-point controls not set to allow linkage to be lowered far	Adjust 3-point controls
PLUGGING BAIT TUBE	Unit not level on center link and bait is pooling inside bait tube	Level the unit during operation or very slightly forward

PREPARATION AND STORAGE

PRE-SEASON

- Review safety precautions in this manual.
- If Gopher Eliminator needs a new point, order early to ensure you receive one in time.
- Check the machine over for material defects and cracks, especially near weld joints. If there are any faults, repair or replace parts before operating the machine.
- Check all bearings on the flat coulter and replace if not in good operating condition.
- Check all bolts, nuts, lock washers, flat washers, roll pins, cotter pins, etc. for being worn, loose or cracked. Replace or tighten as needed.

POST-SEASON

- Remove any trash and debris from machine.
- Wash all soil and excess debris that has accumulated on the machine with pressurized water if available.
- Remove all rust and repaint areas where paint has been removed.
- Make list of parts that need replacing for next use and order them early.
- Make any needed repairs and replace any damaged or worn parts.

SCHLAGEL MFG WARRANTY CLAIM FORM

NOTICE TO DEALER

ANY WARRANTY WORK MUST BE PRE-APPROVED. PLEASE CALL US TOLL FREE 1-888-889-1504. All warranty claims must be submitted in writing using this form within fifteen (15) days of approval. Coverage of parts or labor is limited to warranty period for machine in question (usually one (1) year from invoice date for new machines). SCHLAGEL MFG RESERVES THE RIGHT TO CHOOSE APPROPRIATE ACTION FOR WARRANTY CLAIMS. All parts must be returned to Schlagel Manufacturing for inspection within 30 days of warranty approval. Credit will be applied to dealer account pending receipt and inspection of failed part(s) and receipt of warranty claim to Schlagel Manufacturing. Labor costs for warranty work will be applied as credit on your account.

How would you (the dealer) like to be reimbursed for the part(s). Choose only one (mark w/ an "X")

- Credit applied to our account for parts used at dealer cost (no parts will be sent for dealer stock)
- Ship us replacement parts to replenish our stock

DEALER INFORMATION

COMPANY:	
CONTACT:	
ADDRESS:	
CITY, ST, Z:	
PHONE:	
FAX:	

OWNER INFORMATION

COMPANY	
CONTACT:	
ADDRESS:	
CITY, ST, Z:	
PHONE:	
FAX:	

MACHINE INFORMATION

SERIAL #:		MACHINE DELIVERY DATE:	
MODEL #:		APPROXIMATE ACRES COVERED:	

Accurately describe how and why the part failed. Are there any special circumstances we should know about?

PARTS USED

QUANTITY	PART #	PART DESCRIPTION	QUANTITY	PART #	PART DESCRIPTION

LABOR HOURS:		DATE:	
RATE / HOUR:		TITLE:	
TOTAL:		Signature:	

QUESTIONS? CALL US AT (307) 532-4451 OR (888) 889-1504 MON - FRI 8 AM TO 5 PM.
 PHOTOCOPY THIS FORM FOR YOUR RECORDS. MAIL TO ADDRESS BELOW OR FAX OR EMAIL TO:
SCHLAGEL MANUFACTURING, INC. **FAX TO: 307-532-8994**
4154 BUTTERMILK ROAD **EMAIL TO: SALES@SCHLAGEL.NET**
TORRINGTON, WY 82240

