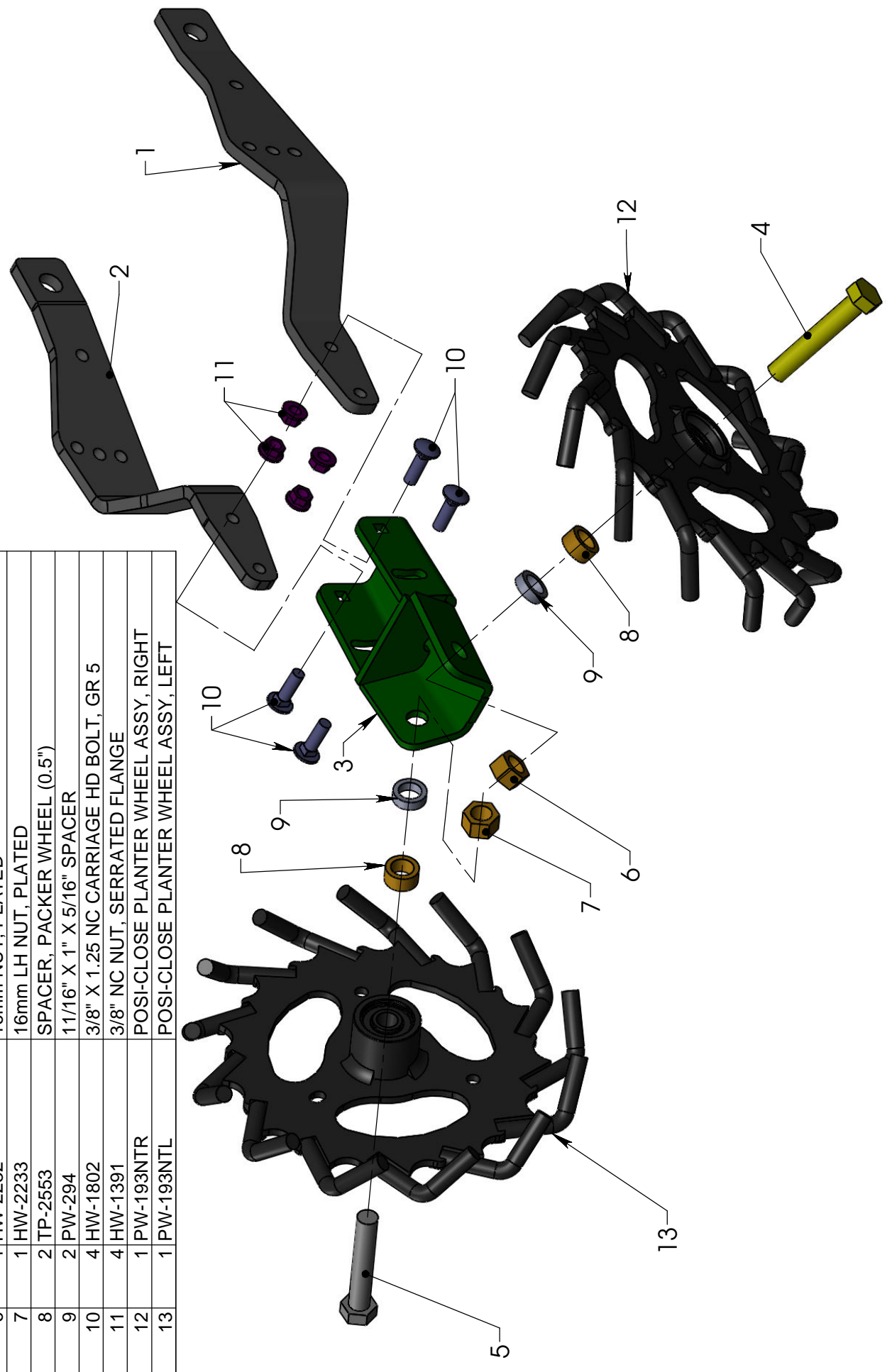
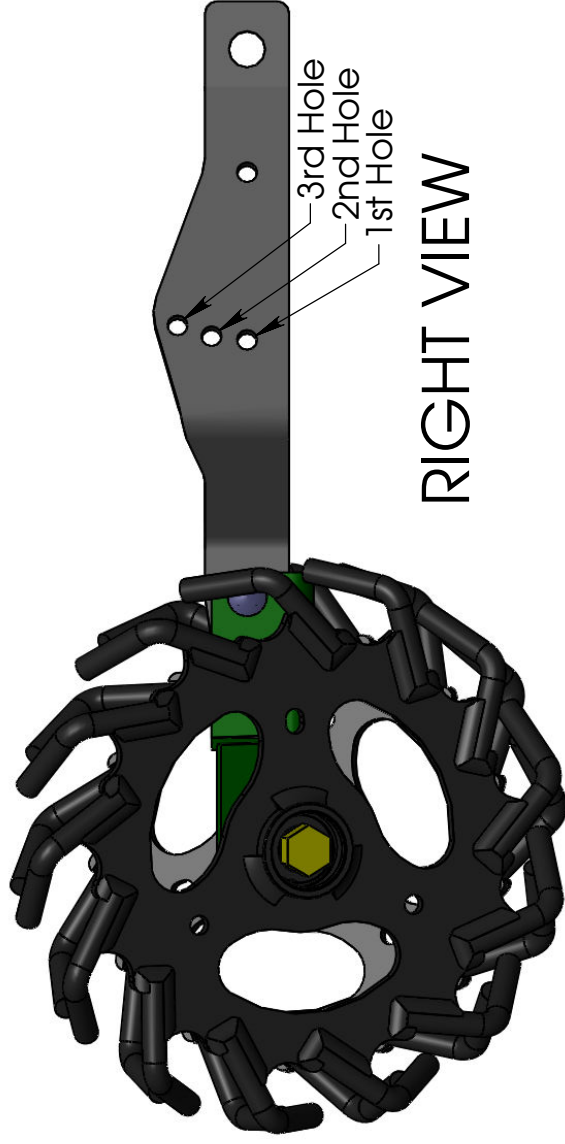
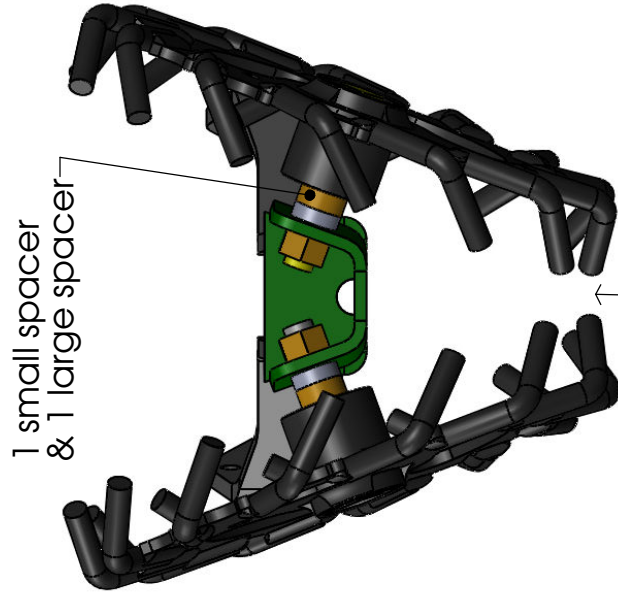
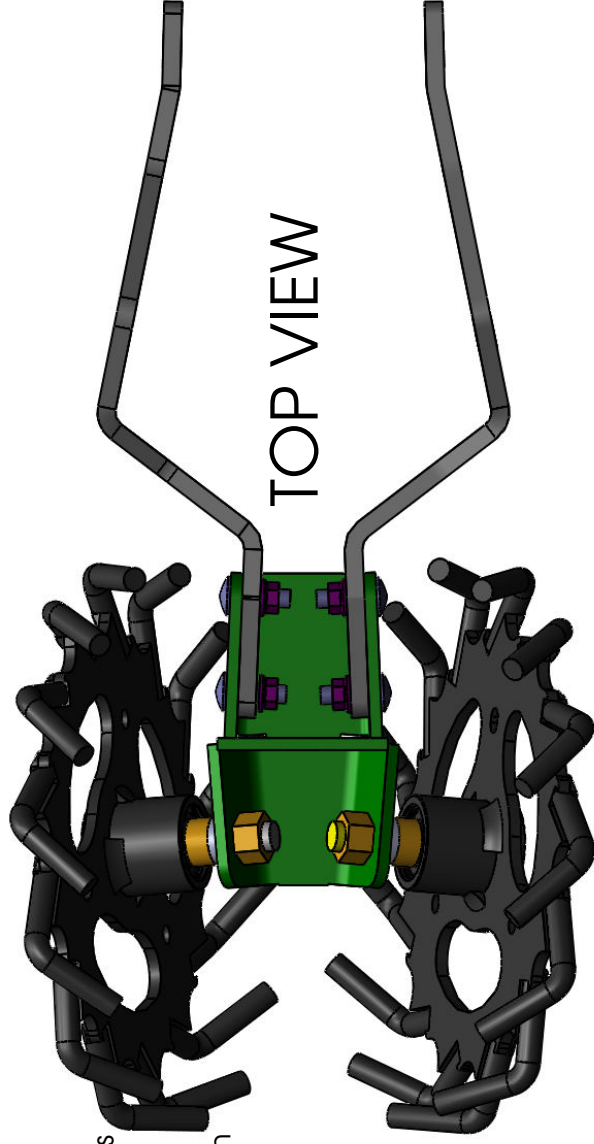


ITEM NO.	QTY.	PART NO.	DESCRIPTION
1	1	PW-288R	RIGHT ARM FOR CASE IH
2	1	PW-288L	LEFT ARM FOR CASE IH
3	1	PW-291	CASE-IH ADAPTER BRACKET
4	1	HW-2230	16mm X 90mm BOLT, GR 8, PLATED
5	1	HW-2231	16mm X 90mm BOLT, GR 8, PLATED Left Hand Thread
6	1	HW-2232	16mm NUT, PLATED
7	1	HW-2233	16mm LH NUT, PLATED
8	2	TP-2553	SPACER, PACKER WHEEL (0.5")
9	2	PW-294	11/16" X 1" X 5/16" SPACER
10	4	HW-1802	3/8" X 1.25 NC CARRIAGE HD BOLT, GR 5
11	4	HW-1391	3/8" NC NUT, SERRATED FLANGE
12	1	PW-193NTR	POSI-CLOSE PLANTER WHEEL ASSY, RIGHT
13	1	PW-193NTL	POSI-CLOSE PLANTER WHEEL ASSY, LEFT



1. Remove rubber press wheel and mount arms from cast piece. (Note: 8" metal closing discs can be left on or taken off. The posi-wheels are design to close seed "V" without these discs.)
2. Attach Mount arms to cast piece with original bolts. Start with 1st hole on arm. If more pressure is required to close seed "V", adjust to second or third hole. (See Figure Below)
3. Attach wheel mount bracket using the supplied 3/8" x 1" carriage bolt. NOTE: the two arms (shown in gray here) go **INSIDE** the main bracket (green). The angle of the bracket is adjustable here. Adjust the angle so that there is 1/4" - 1/2" gap between rods at the bottom and wheels angle slightly forward when viewed from back of planter.
4. Attach wheels using supplied 16mm X 90mm bolt, ensure 1 small spacer and 1 large spacer is between wheel mount and wheel.
5. Note: The left hand thread bolt & nut goes on left side, right hand thread bolt & nut goes on right side.
6. Tighten all bolts.



ADJUST WHEELS SO THAT 1/4" - 1/2" SPACE BETWEEN RODS AT THE BOTTOM